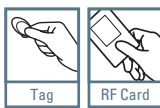


ASK[EM] Format
Proximity Access Controller

IP-RFL200 IP-RFL200C

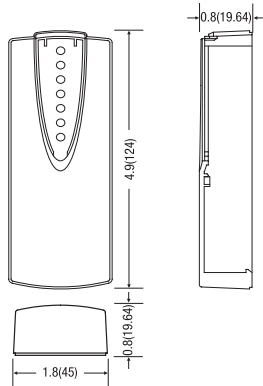


IP-RFL200 / IP-RFL200C



inch(mm)

IP-RFL200 / 200C



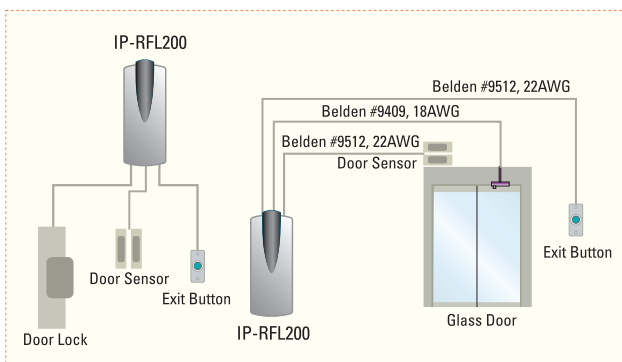
KEY Features

- 125KHz Standalone Proximity Access Controller
- ASK [EM] Format
- IP-RFL200: Standalone / 512 Users including One Master Card (5EA of IDK50 Keytag Included)
- IP-RFL200C: Network Communication via RS485 (Max.255ch/default), RS232(optional) TCP / IP (External LAN Converter required) Wireless (e.g. Bluetooth Module required)
- IP-RFL200C: 512 Users / 256 Event Buffers
- Direct Control of Door Lock
- Power Fail Safe or Power Fail Secure Locks selectable
- Firmware Upgrade via S/W
- Solid Epoxy Potted
- Waterproof
- Warranty: Life Time
- Compatible Software: STAR RFL200C PRO

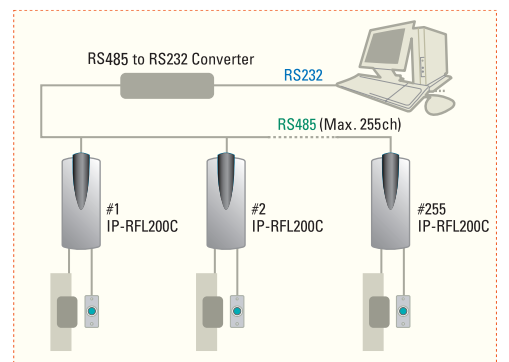
Comparison Table

IP-RFL200	Standalone Including One Master Card Door Open Time: 5sec. (fixed)
IP-RFL200C	Network Communication via RS485 Door Open Time: 1 ~ 99sec. (programmable)

IP-RFL200 Standalone Configuration



Up to 255 Units of IP-RFL200C



Specifications

Model		IP-RFL200	IP-RFL200C
CPU		Dual 8bit Microprocessor	
Memory	Program Memory	64 KByte Flash ROM	
	Data Memory	4KByte EEPROM	
User		512 Users (including 1 Master Card)	512 Users
Event Buffer		N/A	256 Event Buffers
Read Range		IPK50: Up to 2 inch (5cm) IPC80 / IPC170: Up to 4 inch (10cm)	
Reading Time (Card)		30ms.	
Door Open Time		5sec. (fixed)	1~99sec.(programmable)
Power / Current		DC 12V / Max.150mA	
Communication		N/A	RS485(Max.255ch/default), RS232(optional) TCP / IP (External LAN Converter Required) Wiress (e.g. Bluetooth Module Required)
Baud Rate		N/A	9,600bps
Input Port		3ea (Exit Button, Door Sensor, Lock Type Select (Power Fail Safe / Power Fail Secure))	3ea (Exit Button, Door Sensor, Aux#1)
Output Port		2ea (TR Output / DC 12V~18V, Rating Max.2A, Lock Output)	
LED Indicator		9 Array LED Indicators (Red and Green)	
Beeper		Piezo Buzzer	
Operating Temperature	Controller	-35° to +60° C (-31° to +140° F)	
	RF Reader	-35° to +65° C (-31° to +149° F)	
Operating Humidity		10% to 90% relative humidity non-condensing	
Color		Dark Pearl Gray	
Material		Polycarbonate	
Dimension (W x H x T)		1.8" x 4.9" x 0.8" (45mm x 124mm x 19.64mm)	
Weight		80g (0.18 lbs)	
Certification		FCC, CE, MIC, RoHS	

Network Configuration

